

# GENERATION Z: LEAVING SCHOOL

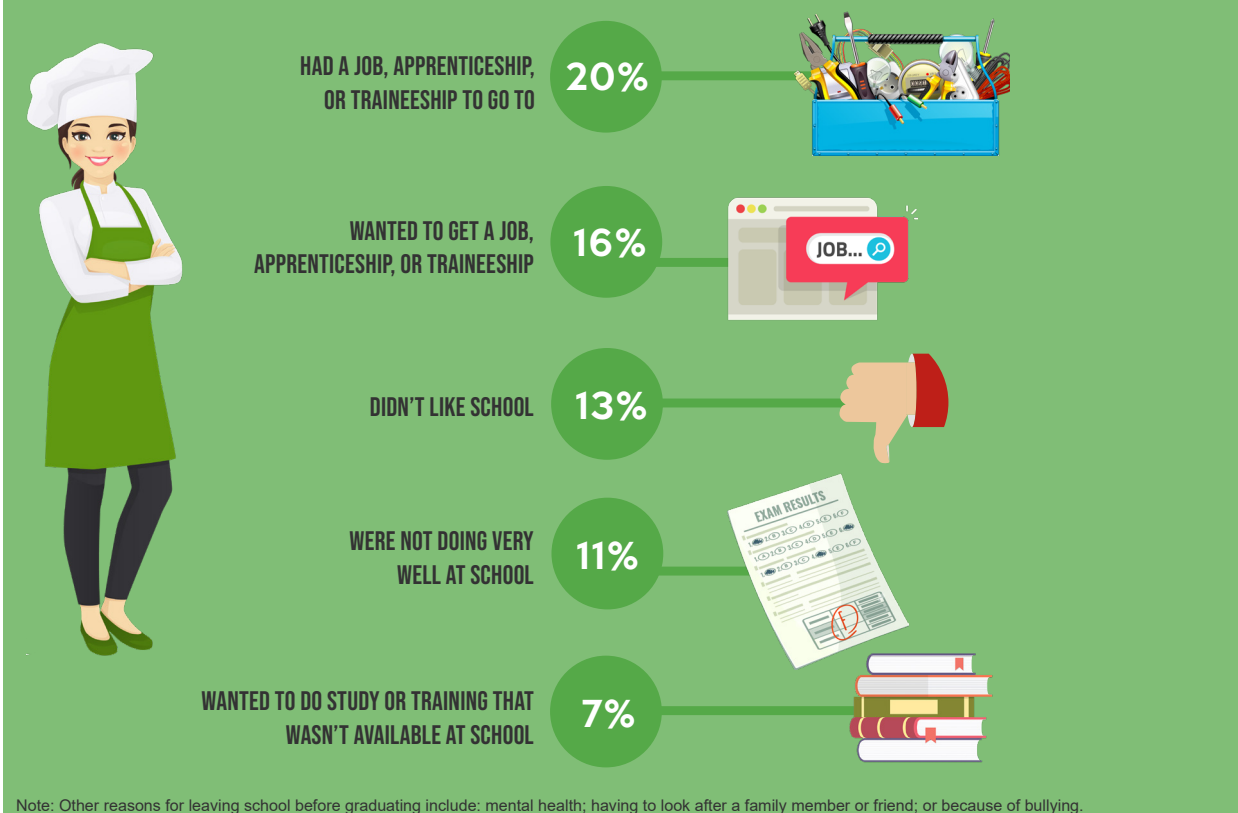
The Longitudinal Surveys of Australian Youth (LSAY) follow young Australians from the age of 15 up until they are 25. *Generation Z: leaving school* explores young people's experiences as they reach the end of their schooling years and begin to transition into post-school study and enter the workforce. It brings together information from the newest group of LSAY participants who commenced the program in 2015 and uses the latest findings from their 2018 interviews (when they were, on average, 18 years old). We look at their rates of Year 12 completion, reasons for leaving school before graduating, and how their post-school activities at age 18 stack up when compared to their plans one year earlier.

## COMPLETED YEAR 12

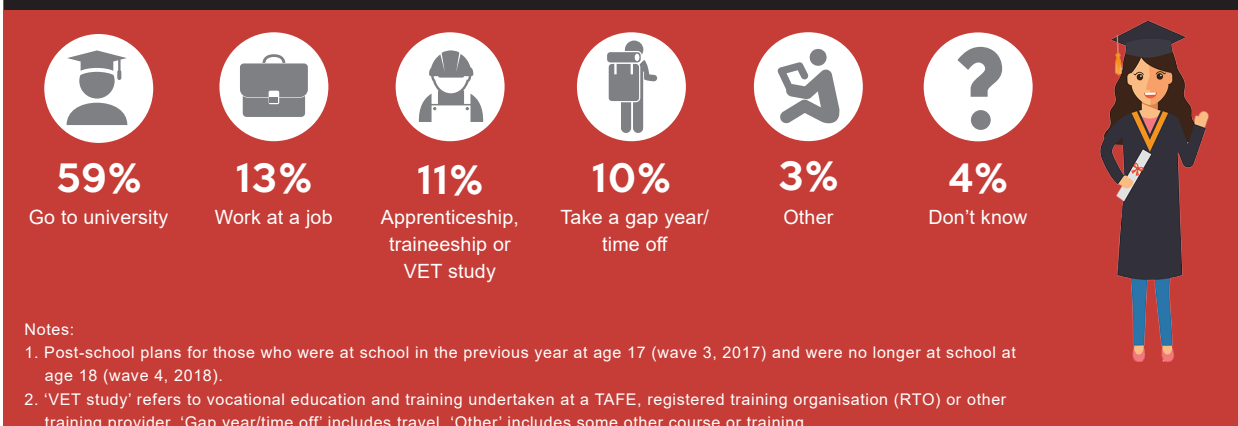


## EARLY SCHOOL LEAVERS

### TOP 5 REASONS FOR LEAVING SCHOOL BEFORE GRADUATING



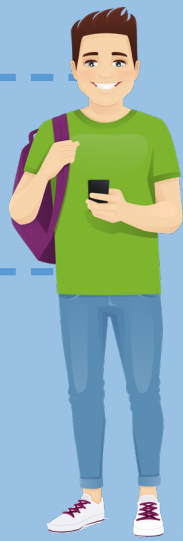
## POST-SCHOOL PLANS



# POST-SCHOOL ACTIVITIES

## UNIVERSITY

Of the **59%** who planned to go to university:



- 69% are at university
- 16% are working (no study/training)
- 9% are doing an apprenticeship, traineeship or VET study
- 6% are not in education, employment or training

## JOB

Of the **13%** who planned to get a job:



- 9% are at university
- 57% are working (no study/training)
- 20% are doing an apprenticeship, traineeship or VET study
- 14% are not in education, employment or training

## APPRENTICESHIP, TRAINEESHIP OR VET STUDY

Of the **11%** who planned to do an apprenticeship, traineeship or VET study:



- 5% are at university
- 35% are working (no study/training)
- 51% are doing an apprenticeship, traineeship or VET study
- 8% are not in education, employment or training

Note: Students who are both studying and working have been categorised using their study activity, with university study taking precedence over VET study (including apprenticeships/traineeships).

# LEAVING HOME



**14%** have left home

### METRO

9% from metro areas have left home

### NON-METRO

26% from non-metro areas have left home

### TYPE OF ACCOMODATION



**52%**  
Renting



**26%**  
University or TAFE residence



**6%**  
Private house as a boarder, hostel or boarding house



**2%**  
Buying a home/ owning a property outright



**14%**  
Other

Notes:

1. Includes those who are no longer living in their parents' home, with family members or a guardian.

2. 'Renting' includes living in a share house or apartment. 'Other' includes a range of accommodation arrangements, for example: friends' home, place owned by parents and military barracks.

## CARING FOR OTHERS

**18%**  
had provided  
unpaid care



**69%**  
Child  
(relative)



**18%**  
Adult  
(relative)



**17%**  
Child  
(non-relative)



**12%**  
Parent(s)



**4%**  
Other

**Notes:**

1. Providing unpaid care is defined as providing at least three consecutive months of unpaid care since last year's interview.
2. 'Child (relative)' excludes own child. 'Other' includes other person or own child.
3. The sum of the figures exceeds 100% because respondents may provide unpaid care to more than one person.

## PAVING FUTURE PATHWAYS

The LSAY program provides a wealth of information on Australian youth, helping us to understand the key events in the lives of young Australians. Information shared by LSAY participants provides valuable insights into how young people transition from school to the world of work that now demands new skills and experience in the face of globalisation and technological change.

The LSAY data continues to inform future youth initiatives and policies and is freely available to researchers, policymakers and those with an interest in youth issues. Visit [www.lsay.edu.au](http://www.lsay.edu.au) to explore the LSAY data and find out how young people are navigating the new millennium.



**60,000+**  
YOUNG PEOPLE SURVEYED  
SINCE LSAY COMMENCED  
IN 1995



**6 COHORTS**  
HAVE BEEN TRACKED  
SINCE 1995



**10 SURVEY  
WAVES**  
AVAILABLE FOR EACH COHORT

**Note:**

Survey responses are weighted to population benchmarks to account for the survey being undertaken as a sample rather than the entire target population.

**Source:**

National Centre for Vocational Education Research 2019, Longitudinal Surveys of Australian Youth, 2015 cohort (version 3.0).  
-- 2017, Longitudinal Surveys of Australian Youth, 2006 cohort (version 10.0).

© Commonwealth of Australia, 2019

For details and exceptions visit [www.lsay.edu.au/copyright](http://www.lsay.edu.au/copyright)

This work has been produced by NCVET through the Longitudinal Surveys of Australian Youth (LSAY) program, on behalf of the Australian Government and state and territory governments, with funding provided through the Australian Government Department of Education.

The views and opinions expressed in this document are those of the author/project team and do not necessarily reflect the views of the Australian Government or state and territory governments.

Images: Getty Images

Stay connected:



[www.facebook.com/LSAY15](http://www.facebook.com/LSAY15)



[www.instagram.com/lsay\\_au](http://www.instagram.com/lsay_au)



[www.lsay.edu.au/subscribe](http://www.lsay.edu.au/subscribe)



Australian Government  
Department of Education

NCVER